

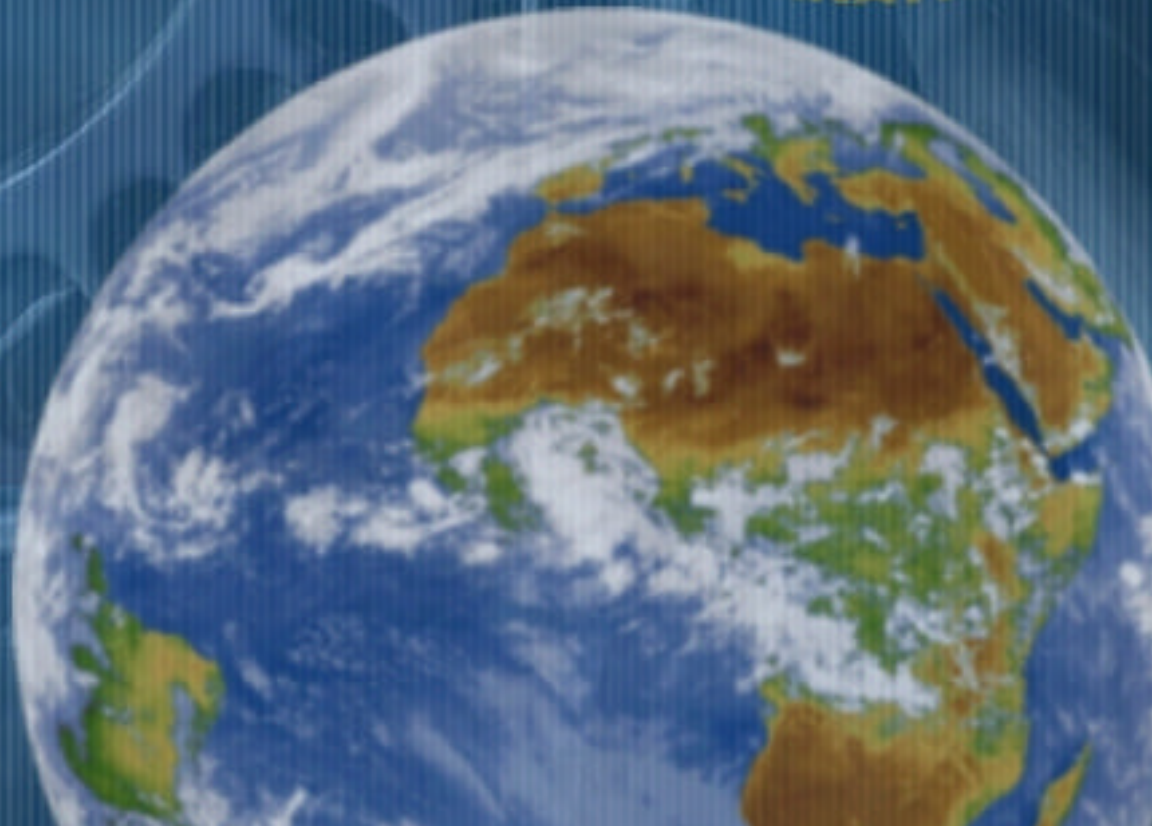
**COMIBASSAL**  
INTERNATIONAL

كوميباسل  
**COMIBASSAL**  
World Wide Services



**AGRICULTURAL  
SERVICES**

**COMIBASSAL**  
INTERNATIONAL



## Services

### **CLEANLINESS CERTIFICATES**

#### **Fitness for loading**

This activity to inspection of vessel's tanks and holds, containers, railway cars and trucks to ensure that the areas/assigned to carry the agricultural goods are:

- ✍ free from any stink, foreign matter, dirt, cargo residues or pest infestation.
- ✍ watertight and safe for the cargo transported

The service is also applicable to warehouses, silos and tanks.

\*\*\*\*\*

#### **Fitness for loading liquids**

Most goods, especially shipped in bulk, must be protected against contamination. Receiving ships' tanks, rail tank cars, trucks, containers and other transport or storage facilities should be carefully inspected for cleanliness and suitability prior to loading.

\*\*\*\*\*

#### **Fitness for loading grains**

This service applies to inspection of ships holds and tanks, containers, railway cars and trucks to ensure that the units assigned to carry the agronomic goods are:

- ✍ free from any odor/ stink, foreign matter, dirt, cargo residues or pest infestation.
- ✍ watertight and safe for the cargo transported The activity is also applicable to land installations like warehouses, silos and tanks.

#### **Fitness for loading foods**

This service applies to inspection of ships holds and tanks, containers, railway cars and trucks to ensure that the areas/units that are to carry the agricultural goods are:

## Services

- ✍ free from any odour, foreign matter, dirt, cargo residues or pest infestation.
- ✍ watertight and safe for the cargo transported
- ✍ The service is also applicable to land installations like warehouses, silos and tanks.

\*\*\*\*\*

### **FOOD SUPERVISION**

- ✍ controlling loading and unloading operations in ports, factories, warehouses, silos, etc.
- ✍ weighing and sampling in silos, warehouses and storage areas.

Close supervision by COMIBASSAL inspectors ensures that

- ✍ Goods are properly handled during storage, loading, and transport
- ✍ Weight is correctly ascertained and samples correctly drawn.

\*\*\*\*\*

### **LIQUID SUPERVISION**

- ✍ controlling loading and unloading operations in ports, factories, warehouses, silos, etc.
- ✍ goods are properly handled during storage, loading, and transport
- ✍ weight is correctly ascertained and samples correctly drawn.
- ✍ Calculation the quantity loaded by land tanks and mobile tanks

Close supervision by COMIBASSAL inspectors ensures that

- ✍ performing the required analysis. performing the required analysis.

\*\*\*\*\*

### **GRAIN SUPERVISION**

- ✍ controlling loading and unloading operations in ports, factories, warehouses, silos, etc.
- ✍ weighing and sampling in silos, warehouses and storage areas.

Close supervision by COMIBASSAL inspectors ensures that

- ✍ Goods are properly handled during storage, loading, and transport

## Services

- ✍ Weight is correctly ascertained and samples correctly drawn.
- ✍ Ensure of the quality specified by visual inspection and ascertaining by lab. Analyses
- ✍ Performing the required analyses based on the contracts or the standard specification.

\*\*\*\*\*

## COMMODITIES

Our activities cover range of commodities like wheat, flour, beans, lentils, peas , corn, rice , sorghum, soybean and its derivatives , sugar , cocoa, coffee, fruits , tea, vegetables, vegetable oils, fats, dairy products, fertilizers, fish, meat , poultry , feeding stuffs, wood, molasses, general cargo.

If you are searching specific service which is not in the list don't hesitate to contact us.

COMIBASSAL Certification is your partner in inspection and certification for a wide range of certification programs.



## Services

### Pest Control

Insects and rodents are a permanent threat to the quality of goods and products during processing, storage and transport. COMIBASSAL supplies first class pest control services to manage these bio risks in a safe and professional way.

#### These services comprise:

- ? Curative pest control, pest prevention, monitoring of pests
- ? Prevention and control of Rodents
- ? Prevention and control of crawling, flying and social insects
- ? Prevention and control of stored product pest
- ? Documented pest control management systems
- ? Bio risk assessment

In industrial processing, pest-related damage in addition to chemical or physical contamination cause enormous economical losses and huge claims.

Stored product protection, pest control, pest prevention and industrial hygiene are highly specialized areas that require state of the art know-how and expertise..

As a trend-setting service provider in this field, COMIBASSAL established working procedures and technology to comply with the stringent local and international legislations as well as the international quality standards. Food safety, residue control, product quality along with efficient service are high priorities in our integrated work.

### Quantity Inspection and Control

Whenever crude oil, is traded, transported or distributed, COMIBASSAL protects the interests of our customers through sampling, measurement and inspection techniques that are designed to reduce losses and avoid contamination which is detrimental to the products' specifications and their value. Risks may arise at any point in the chain of custody, at a point of transfer, at loading or discharge, or as a result of problems in the products' manufacture, their storage, or the way they have been transported. COMIBASSAL is there at every point in the transaction to help you manage your risk.

## Services

Inspection and control of these products by COMIBASSAL specialists will significantly reduce your commercial exposure.

- ? Representation at site of operation
- ? Regular updates and communication
- ? Monitoring of terminal and vessel operations
- ? Advice on maintenance of cargo integrity
- ? Tanks and pipeline inspection and verification
- ? Loss control monitoring and investigation
- ? Condition inspection
- ? Cleanliness inspection
- ? Sampling and measurement
- ? Sealing
- ? Others

Being a market leader, COMIBASSAL reports are widely accepted as confirmation for the quantity and quality of the custody transfer. During operations, the customers are kept advised minute-by-minute of the situation that may develop and affect the movement in which they have an interest.

### COMIBASSAL Grading On-site Grain

Our aim is to identify, grade, and segregate grains in silos and warehouses using state-of-the-art equipment installed inside mobile labs. Grain samples are analyzed and graded by highly trained staff. The quick, accurate results obtained facilitate the allocation of grains into pre-determined bins.

The presence of COMIBASSAL at silo intake, during storage, and during outtake allows the continuous tracking of quality and quantities placed in the silo. This process offers to the interested parties selective blending of grains in order to achieve the optimum combination that matches minimum contractual specifications at the time of loading onto trucks, trains, barges or vessels - and therefore maximizes the value of commodity.

All the data gathered is stored on a platform and can be accessed in real time at any moment by the parties having been granted access.

- ? eliminates quality concerns
- ? increases client's chances for obtaining financing / credit lines
- ? optimizes return on capital

## Services

- ? extracts maximum value for the harvested grain
- ? reduces client's operational costs
- ? improves quality control over consignment

## Veterinary Department

Business line: Animal meat, Poultry and their products, Fish

Quality, quantity inspection and Control services

### I- Animal

- Evaluation and selection of cattle breeds either for beef or dairy breed.
- Following up and examination of cattle and sheep during quarantine period to ensure that the animals are free from any contagious or infectious diseases.

II Inspection of **animal meat**, poultry and fish in their country of export for the following:

- Control of abattoirs and their hygiene.
  - Antimortem inspection including:-
    1. Age
    2. inspection of animal to ensure its health and fitness
    3. Ensure application of slaughtering according to Islamic method
  - Postmortem Inspection including:-
    1. carcass inspection
    2. Elimination of sources of carcass contamination
    3. control of different stages to ensure that the carcasses are free from infectious or contagious diseases
  - Inspection of animal by – products like:-
    1. Bone meal
    2. Fish meal
    3. Meat and bone meal
- III- Inspection **imported meat**, poultry and fish by
- Organolyptic examination
  - Sampling

## Services

- Chemical examination
- Microbiological examination
- Supervision of wrapping, handling, storage and transportation
- IV- Specification and Evaluation **animal feeds** (Ruminants, poultry, fish) by:
  - Nutritional value of animal feeds
  - Determination of toxins in animal feeds
  - Methods of adulteration in animal feeds by:-
    - ✍ Sampling
    - ✍ Chemical analysis
  - Determination of cyanide in plants
  - Determination of nitrates and nitrites
  - Determination of aflatoxin and Mycotoxin
  - Determination of Moisture, energy, fiber, nitrogen, organic matter, mineral, vitamins, ash
- IV- Inspection of **liver** to ensure its fitness to human consumption
- V- Hygienic control of **milk and its products** by
  - Sampling
  - Determination of keeping quality
  - Microbiological examination to eliminate any zoonotic diseases
  - Determination of hygienic standards for milk and its products
- VI- Specification and **evaluation of preserved foods** by:
  - Sampling
  - Organoleptic examination
  - Chemical analysis
  - Microbiological analysis
- VII- **Hygienic and quality control of foods** in hotels, hospitals, clubs and petroleum companies